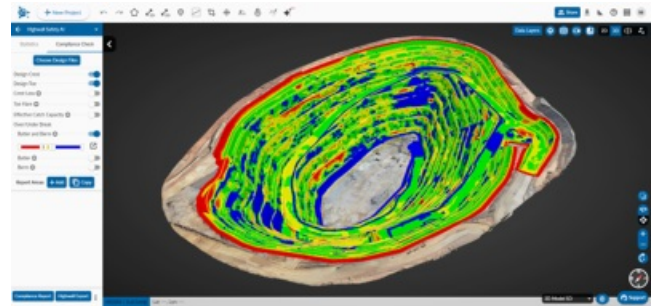


## Trimble Unveils Trimble Mine Insights to Deliver AI-Powered Analytics to Optimize Mining Operations

*New Cloud-based Solution Automates Critical Mine Workflows to Enhance Decision Making, Productivity and Safety*

**LAS VEGAS, November 11, 2025** — [Trimble](#) today introduced Trimble Mine Insights, powered by the [Strayos AI engine](#). As the latest integration to the Trimble Connect collaboration platform, Mine Insights is a cloud-based mining analytics application that provides AI-powered insights to mining and quarrying professionals for optimizing surveying, drilling, blasting and geotechnical workflows.



*The AI-powered highwall and slope stability analysis in Trimble Mine Insights helps geotechnical teams identify and prioritize high-risk areas.*

This powerful software provides essential drill and blast design, surveying and site analytics functionality. It connects data to deliver deep production insights, creating significant efficiency gains for different roles on the mine site:

- **For mine surveyors:** Quickly visualize the haul road network for conformance and safety. Use haul road AI tools to dispatch support equipment and fix issues in the field fast.
- **For drill and blast engineers:** Determine blast performance and achieve production targets using fragmentation AI tools that optimize processing times.
- **For geotechnical engineers:** Investigate a slope's safety factor with slope stability AI to quickly determine high-risk areas requiring immediate monitoring for safe working conditions.

Integrated with Trimble Connect, the software uses field and office data from Trimble hardware and software to automate analysis of geospatial and site data, turning it into actionable decision-making.

"Trimble Mine Insights is poised to transform how mining professionals approach their daily tasks by closing the loop between data collection and operational action," said Riley Smith, director of mining, tunneling and monitoring at Trimble. "This empowers our customers to make faster, more informed decisions that drive greater operational outcomes."

Trimble Mine Insights directly tackles common pain points experienced by mining professionals with the following benefits:

- **Maximizes productivity:** The solution automates and streamlines key workflows across surveying, drilling, blasting and geotechnical tasks, enabling faster and more efficient mine operations. This includes automated stockpile and end-of-month volume reporting, which provides accurate material tracking for timely reconciliation.
- **Reduces operational costs:** It helps optimize operations and maintenance, leading to more efficient resource utilization. For instance, the haul road AI tool can reduce haul truck tire wear and fuel consumption, locate non-conforming safety berms, and determine crossfall for water drainage.
- **Actionable data for mine safety:** The software's AI-powered highwall and slope stability analysis helps geotechnical teams identify and prioritize high-risk areas. It pinpoints potential failure locations that require detailed analysis, enabling deployment of automated monitoring systems like Trimble 4D Control™ for continuous deformation analysis and alarming.
- **Improves team alignment and decision-making:** As part of Trimble Connect ecosystem, it fosters better collaboration and data traceability across various mining departments and professionals.
- **Allows for value-driven integration:** Trimble Mine Insights uses data from Trimble hardware and software to better understand production operations. For example, drill data from Trimble Groundworks drilling machine control system analyzed in Trimble Mine Insights can optimize future blast performance and fragmentation while point cloud data from the Trimble SX12 scanning total station assists with future blast pattern design. This creates a unified field-to-office-to-cloud workflow and reduces manual data transfer and potential errors.

Trimble Mine Insights will be on display at the Trimble Dimensions 2025 User Conference, November 10-12, 2025 in Las Vegas and will be available via select dealers in Trimble's dealer network in Q4 2025. The following sessions will feature hands-on demonstrations:

- Tuesday, Nov. 11 at 1:30 p.m. PST: “Hands on with Trimble Software to Perform Efficient Management and Modeling of Mine and Quarry Surfaces.”
- Wednesday, Nov. 12 at 1 p.m. PST: “Enhancing Haul Road Slope Conformance and Management in Mines and Quarries with Trimble's Mining Solutions.”

For more information on Trimble’s mining solutions, visit <https://geospatial.trimble.com/en/industries/mining>.

#### **About Trimble**

Trimble is a global technology company that connects the physical and digital worlds, transforming the ways work gets done. With relentless innovation in precise positioning, modeling and data analytics, Trimble enables essential industries including construction, geospatial and transportation. Whether it's helping customers build and maintain infrastructure, design and construct buildings, optimize global supply chains or map the world, Trimble is at the forefront, driving productivity and progress. For more information about Trimble, visit: [www.trimble.com](http://www.trimble.com).

---

<https://news.trimble.com/Trimble-Unveils-Trimble-Mine-Insights-to-Deliver-AI-Powered-Analytics-to-Optimize-Mining-Operations>