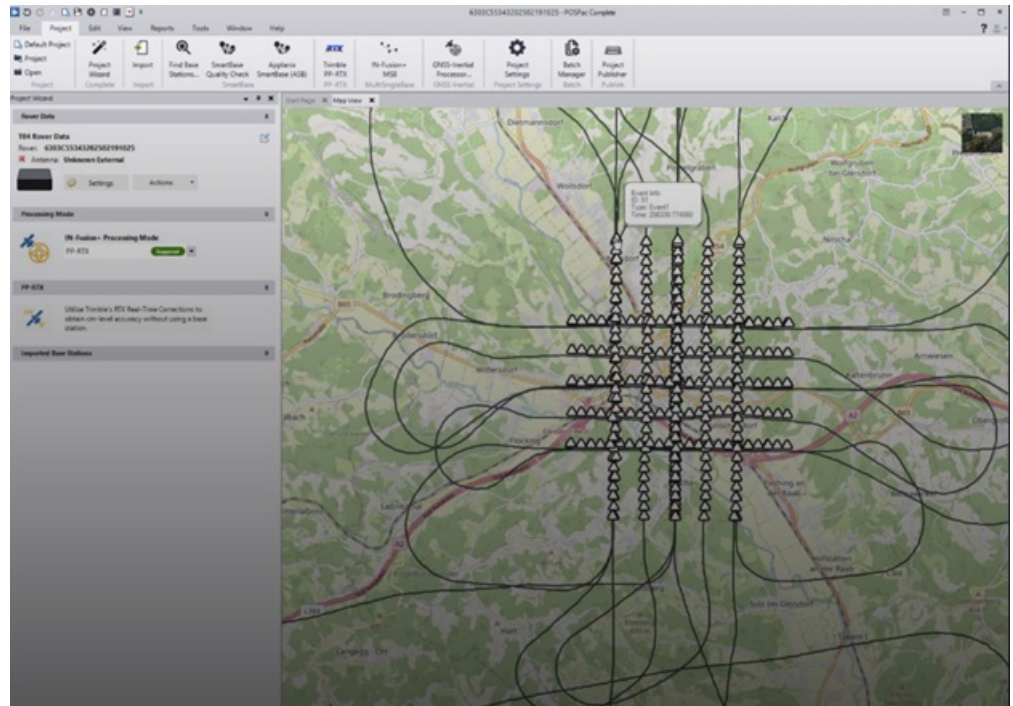


New Trimble Software Enhances Mobile Mapping Workflows

A Single Subscription Integrates Leading Trimble Technologies for a Complete, Simplified Solution that Eliminates Base Stations and Boosts Efficiency

WESTMINSTER, Colo., October 2, 2025 — Trimble® announced today its next-generation post-processing software, Trimble Applanix POSPac Complete. The solution combines Trimble's cutting-edge, industry-leading technologies: Trimble ProPoint® positioning engine, [post-processed Trimble CenterPoint® RTX](#) (POSPac PP-RTX) and [Applanix IN-Fusion+ multi-sensor aided inertial engine](#). This combination offers geospatial professionals the ability to deliver unparalleled accuracy and efficiency in the crewed and uncrewed airborne (UAV), land and marine mobile mapping and surveying industries.



Applanix POSPac Complete

POSPac Complete will be showcased at INTERGEO 2025, the world's leading trade fair for geodesy, geoinformation and land management, where Trimble is a platinum sponsor.

A redesigned software solution embedded with POSPac PP-RTX, Applanix POSPac Complete is available exclusively as an all-in-one term license that bundles essential GNSS augmentation options — single base, Applanix SmartBase post-processed VRS and POSPac PP-RTX service — into a single, transparent annual fee. This eliminates hidden costs, simplifies budgeting and ensures access to software updates, while Trimble RTX removes the need for base stations and provides global coverage.

Because Trimble RTX is embedded into the software, users around the world can attain seamless and efficient workflows with centimeter-level accuracy, even in remote or inaccessible areas, greatly increasing productivity in their mapping process. Additional time savings are gained with the elimination of the time-consuming and challenging task of setting up and managing base stations that may be in different local datums or epochs.

“The new POSPac Complete is more than just a software update; it's a paradigm shift in how geospatial professionals achieve high-accuracy results because of Trimble's unique RTX factor,” said Nico Jaeger, product manager at Trimble. “By integrating the power of PP-RTX directly into the software, we've eliminated the logistical headaches of base stations and streamlined the entire workflow, making mobile mapping more accessible than ever before. Altogether, it helps new and experienced users to produce survey-grade results with unprecedented speed and simplicity, truly representing the next generation of geospatial processing software.”

Additional Features in the New POSPac Complete Include:

- Modernized user interface: A new look and feel with a background map and a streamlined project wizard for easier and more efficient workflows, and a better user experience.
- Trimble IonoGuard™: Trimble's latest technology that detects and mitigates the effects of ionospheric scintillation, which is especially important during the solar activity peaks, supported in single base and PP-RTX processing modes.
- Optional add-on features available for purchase:
 - Camera QC tools: The robust successor to CalQC, providing rapid IMU to camera boresight calibration for single-head and multi-head (oblique) camera constellations with minimal user interaction.
 - LiDAR QC tools: Trimble's leading software application for IMU to LiDAR boresight calibration and trajectory adjustment using SLAM techniques is now enhanced with support for automatic ground control point (GCP) detection, the RIEGL Lidar native file format and reduced RAM requirements for faster processing.

The POSpac Complete solution will be available in November 2025 through the Trimble sales channels. For more information or to request a demo, please visit <https://applanix.trimble.com/en/software/applanix-pospac-complete>.

About Trimble

Trimble is a global technology company that connects the physical and digital worlds, transforming the ways work gets done. With relentless innovation in precise positioning, modeling and data analytics, Trimble enables essential industries including construction, geospatial and transportation. Whether it's helping customers build and maintain infrastructure, design and construct buildings, optimize global supply chains or map the world, Trimble is at the forefront, driving productivity and progress. For more information about Trimble, visit: www.trimble.com.

GTRMB